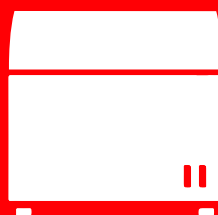


CONTENDER

STEP UP TO THE PLATE



ICE CREAM REFRIGERATOR

FZ1018

The background of the page is a close-up photograph of an ice cream display. In the foreground, there is a large tray of orange-colored ice cream with a wavy, ribbed texture. To the right, another tray contains a light-colored ice cream topped with chopped nuts. Above the trays, there are signs with Cyrillic text: 'КОРПУС-ДВИЖ' and 'КОРПУС'.

CONTENTS

1. GLASS SHOW CASE OVERALL VIEW	4
2. NECESSARY EQUIPMENTS FOR THE INSTALLATION	4
3. GLASS SHOW CASE GROUP PARTS	4
4. TECHNICAL SPECIFICATIONS.....	4
5. INSTALLATION STEPS	6



I. GLASS SHOW CASE OVERALL VIEW

FINAL VIEW OF THE REFRIGERATOR AFTER THE INSTALLATION OF THE ICE CREAM REFRIGERATOR GLASS SHOW CASE IS SHOWN IN **IMAGE A**.

2. NECESSARY EQUIPMENT FOR THE INSTALLATION

1. CHARGEABLE OR ELECTRICAL DRILL
2. 3MM DRILL BIT
3. CORDLESS SCREWDRIVER

3. GLASS SHOW CASE GROUP PARTS (IMAGE B)

No	Part Name	Quantity
1	Glass Fixation Al Glass Profile	1
2	Right Glass	1
3	Left Glass	1
4	Glass Gasket	2
5	Display Group Glass Cap	4
6	Curved Glass Reinforcement Left	1
7	Curved Glass Reinforcement Right	1
8	Side Glass Fixation Left	1
9	Side Glass Fixation Right	1
10	SCREW ST 4,2X22 YHB DRILL BIT ZN-	4
11	SCREW ST 4,2X25 YHB BLACK GEOMET	4
12	Glass Fixation Bushing	4
13	SCREW ST 3,9X13 RYSB DAKROMET DRILL BIT	8
14	Front Curved Glass	1

4. TECHNICAL SPECIFICATIONS

SKU/MODEL	FZIOI8
OPERATING TEMPERATURE (°C)	"-15/-23"
EXTERIOR DIMENSIONS LXWXH (MM)	I305 x 635 x I255
INTERIOR DIMENSIONS LXWXH (MM)	II80 x 510 x 560

IMAGE A

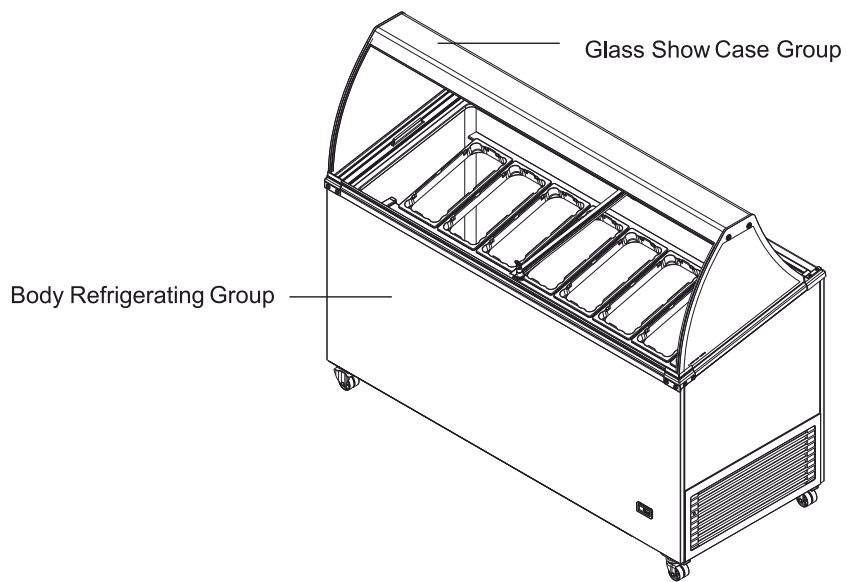
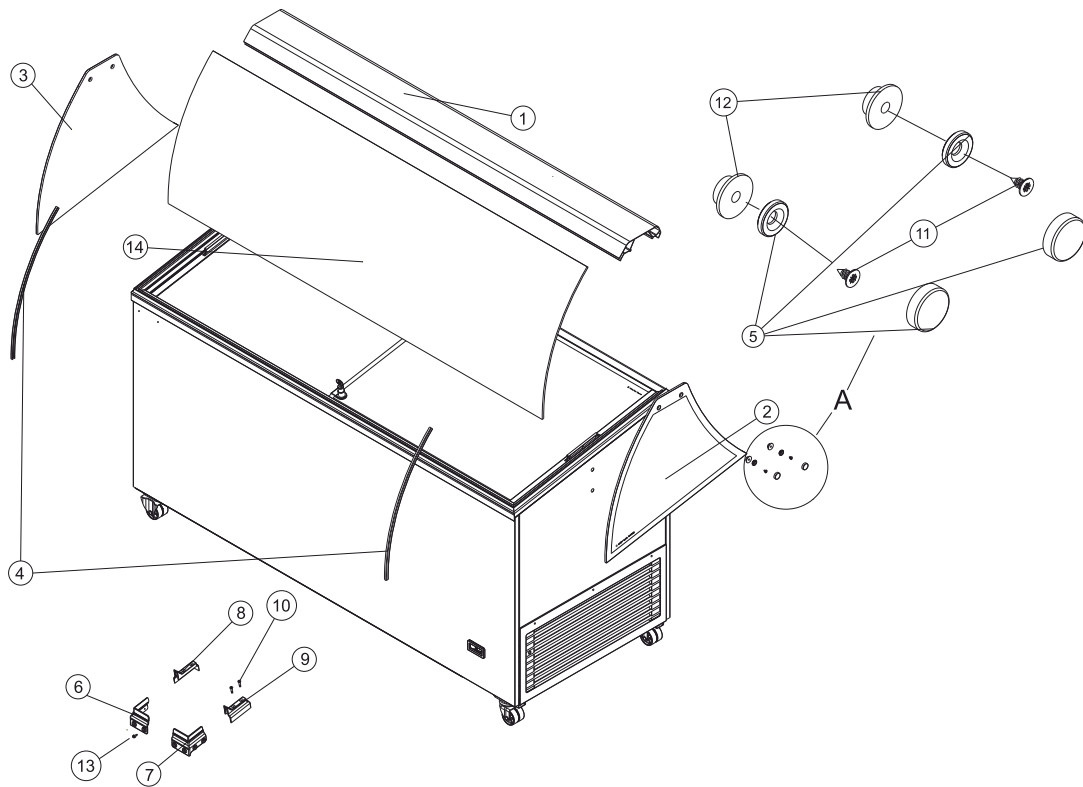


IMAGE B



NOTE: THE INFORMATION AND IMAGES PROVIDED ARE OPTIONAL. THEY MAY VARY DUE TO MODELS AND VERSIONS. RG DISTRIBUTORS LTD T/A ECATERING RESERVES THE RIGHT TO MAKE CHANGES IN TECHNICAL SPECIFICATIONS.

5. INSTALLATION STEPS

A. STRIPPING OF INOX SHEETS' LABELS

INOX SHEETS OF THE PRODUCT IS SENT WITH PVC COATING IN ORDER TO PREVENT SCRATCHING. PVC COATINGS (IF ANY) ON THE INOX SHEETS SHOULD BE STRIPPED AND MADE READY FOR THE CUSTOMER'S USAGE.

B. GROUPING OF GLASSES

BEFORE THE START OF GROUPING OF THE GLASSES, SINGLE-SIDED ADHESIVE FOAMS INSIDE THE DISPLAY GROUP ARE APPLIED TO THE BOTTOM OF THE GLASSES, ADHESIVE SIDE OF THE FOAM SHOULD FACE TO THE GLASS. THE FOAMS SHOULD NOT BE SEEN WHEN THE GLASSES ARE PLACED INTO THE FRAME. YELLOW GELATINE OF THE FOAMS WILL BE STRIPPED AND ADHERED AT THE BOTTOM SURFACES OF THE GLASS. THIS WILL BE APPLIED AS SEEN IN **IMAGE 4.1**.

GLASSES WILL BE SEEN AS IN **IMAGE 4.2** AFTER THE APPLICATION OF THE FOAM.

SINGLE-SIDED ADHESIVE FOAM WILL BE APPLIED TO THE CURVED GLASS IN THE SAME WAY, ADHESIVE SIDE OF THE FOAM SHOULD FACE TO THE GLASS AND SHOULD BE CENTERED. THE APPLICATION IS SHOWN IN **IMAGE 4.3**.

CAUTION: FOAM APPLICATION MUST BE MONOLITH FOR EACH GLASS.

FIRSTLY, NO.4 GLASS GASKET SHOULD BE PLACED AT THE LEFT AND RIGHT SIDES OF THE FRONT CURVED GLASS. THIS GASKET WILL PREVENT THE CONTACT OF THE GLASSES. GLASS GASKET WHICH IS APPLIED TO THE LEFT SIDE OF THE CURVED GLASS IS SEEN IN **IMAGE 4.4**.

GROUPED VIEW OF THE CURVED AND SIDE GLASSES IS SEEN IN **IMAGE 4.6**.

CAUTION: GLASS GASKET SHOULD BE PLACED TO THE GLASSES PROPERLY. THEY SHOULDN'T CAUSE THICKENING, IT SHOULD BE SEEN AS IN **IMAGE 4.5**.

FOAM OF THE LOWER PARTS OF GLASSES WILL LOOK AS IN **IMAGE 4.6** AFTER GASKETS OF THE CURVED GLASSES ARE PLACED. UPPER EXTRUSION IS MOUNTED PROPERLY ON THE CURVED GLASS WHILE GLASSES ARE HELD IN A STABLE MANNER IN THIS WAY. INSERTION DETAIL AND INSTALLATION OF THE ALUMINIUM PROFILE ARE SEEN IN **IMAGE 4.7**.

CAUTION: GLASSES ARE FRAGILE MATERIALS, THEREFORE THIS PROCESS SHOULD BE HANDLED CAREFULLY. BE SURE THAT GLASS GASKETS ARE NOT DISPLACED DURING ASSEMBLY.

AS IT IS SEEN IN **IMAGE 4.8**, ASSEMBLY OF FIXATION BUSHING AND WASHING SHOULD BE PERFORMED WITH 4,2 x 25MM YHB GEOMET SCREW FOR BOTH RIGHT AND LEFT GLASSES.

CAUTION: 4,2 x 25MM YHB GEOMET BLACK SCREWS WILL BE USED HERE. DRILL BIT SCREWS SHOULD NOT BE USED. (**IMAGE 4.9**) AFTER THIS PROCESS METALLIC CAPS ARE ROTATED CLOCKWISE AND SCREWS ARE HIDDEN.

C. INSTALLATION OF PLASTIC PARTS

AS IT IS SEEN IN **IMAGE 4.10**, AFTER THE PLASTIC PARTS ARE ALINED THE HOLES THAT WILL BE SCREWED SHOULD BE MADE BY 3 MM DRILL BIT PROPERLY.

AFTER THIS, THE INSTALLATION WILL BE PERFORMED WITH SCREW_ST_3,9X13_RYSB_DAKROMET_DRILL_BIT. CROSS SECTION DETAIL AFTER INSTALLATION SHOULD BE SEEN AS IN **IMAGE 4.11**.

FIXATION PLASTIC PROFILE AND GLASS OF SIDE GLASSES WILL BE FIXED AS SEEN IN THE IMAGE. AFTER THE HOLES ARE MADE BY 3 MM DRILL BIT, SCREW_ST_4,2X22_YHB_DRILL_BIT_ZN SCREW SHOULD BE USED FOR ASSEMBLY. THIS PROCESS SHOULD BE PERFORMED FOR BOTH LEFT AND RIGHT PLASTIC PARTS.



IMAGE 4.1



IMAGE 4.2



IMAGE 4.3

ONE-SIDED ADHESIVE FOAM WILL BE APPLIED ON AREAS SHOWN.



IMAGE 4.4



IMAGE 4.5

IMAGE 4.6

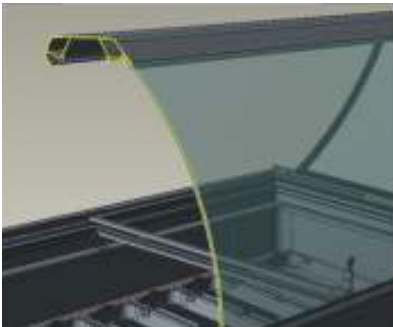


IMAGE 4.7

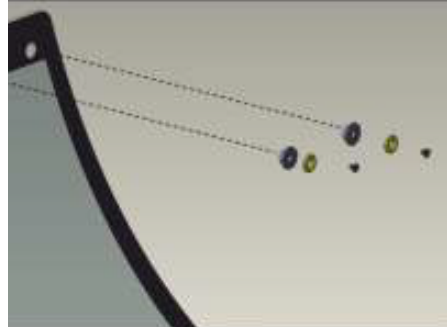


IMAGE 4.8

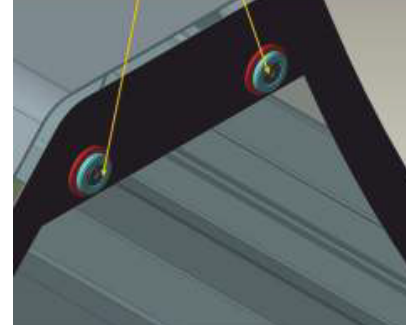


IMAGE 4.9

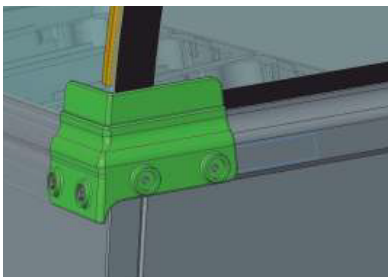


IMAGE 4.10

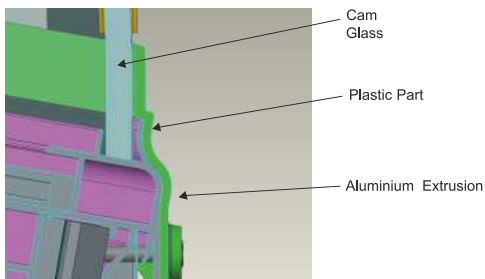


IMAGE 4.11

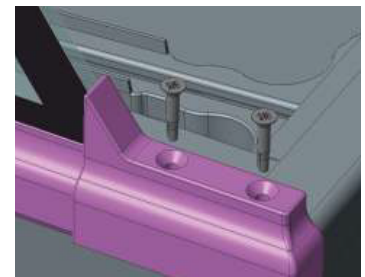


IMAGE 4.12

CONTENDER ICE CREAM SERVE OVER COUNTER & FREEZER STORAGE • SKU: FZ1018



STEP UP TO THE PLATE

DISTRIBUTED BY RG DISTRIBUTORS LTD. TEL: 0333 358 3678